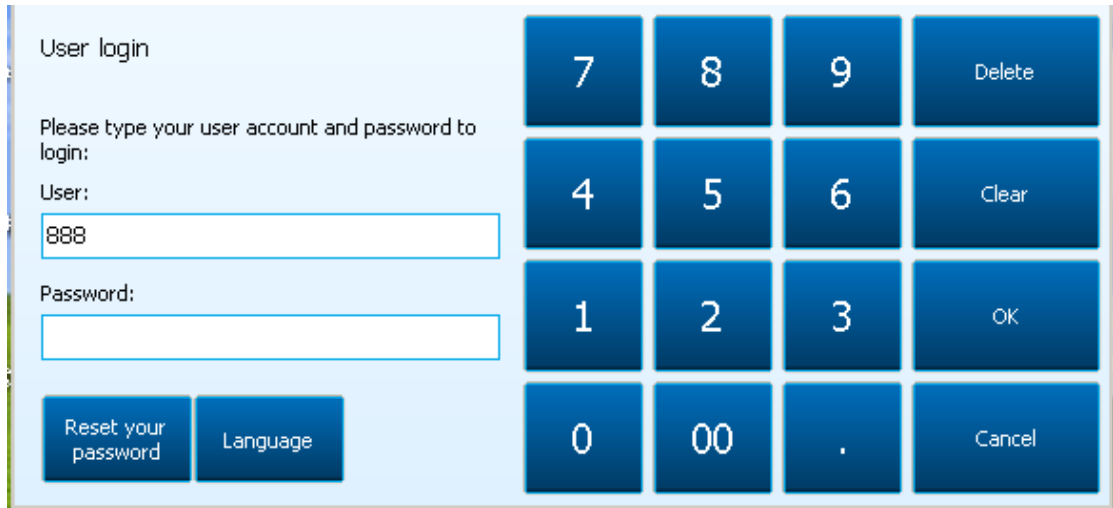


S12 multi-language Restaurant software Manual

一、Chapter 1 management and operation of food and beverage

二、Logon backstage management



User login

Please type your user account and password to login:

User:

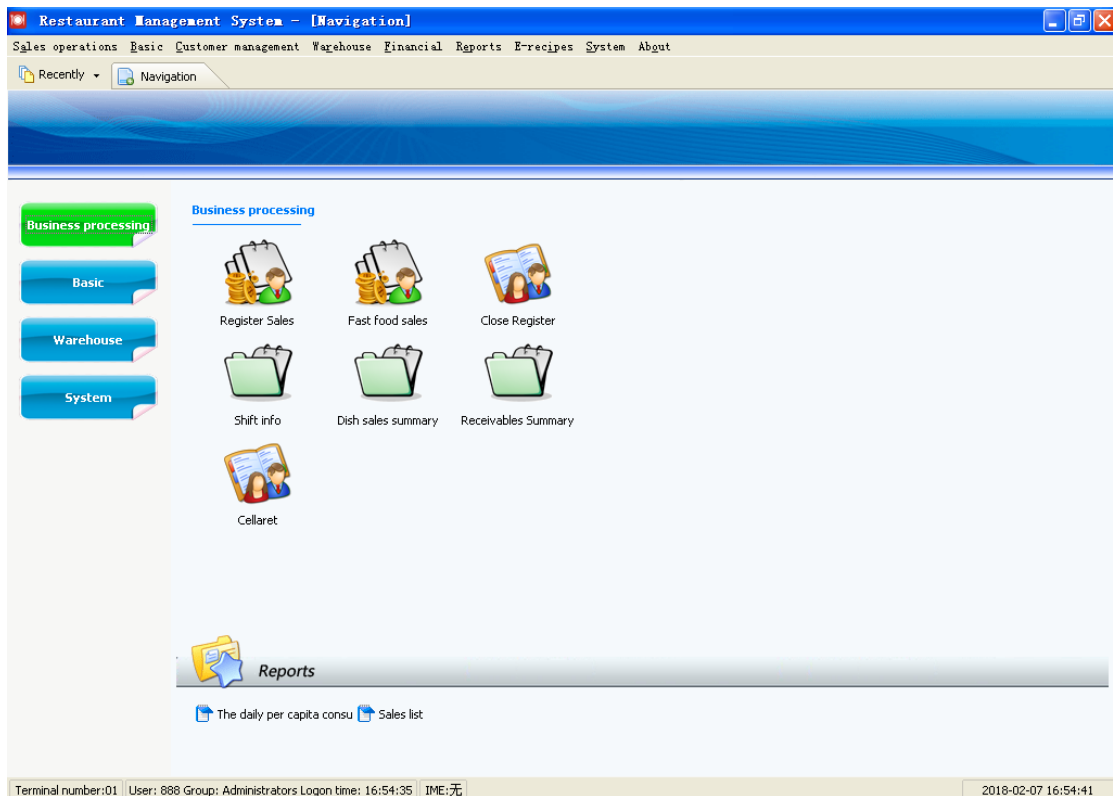
Password:

Reset your password Language

7	8	9	Delete
4	5	6	Clear
1	2	3	OK
0	00	.	Cancel

◇ **user:** (如: **888**)

◇ **Password:** empty.



- 1、Establishing the basic archives
- 2、open a menu **【Basic】 > 【Table classification】**

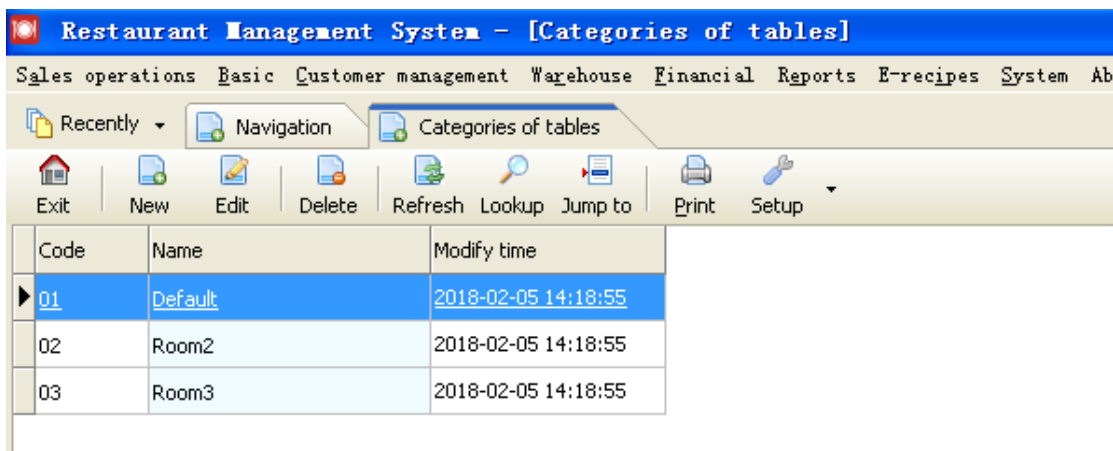
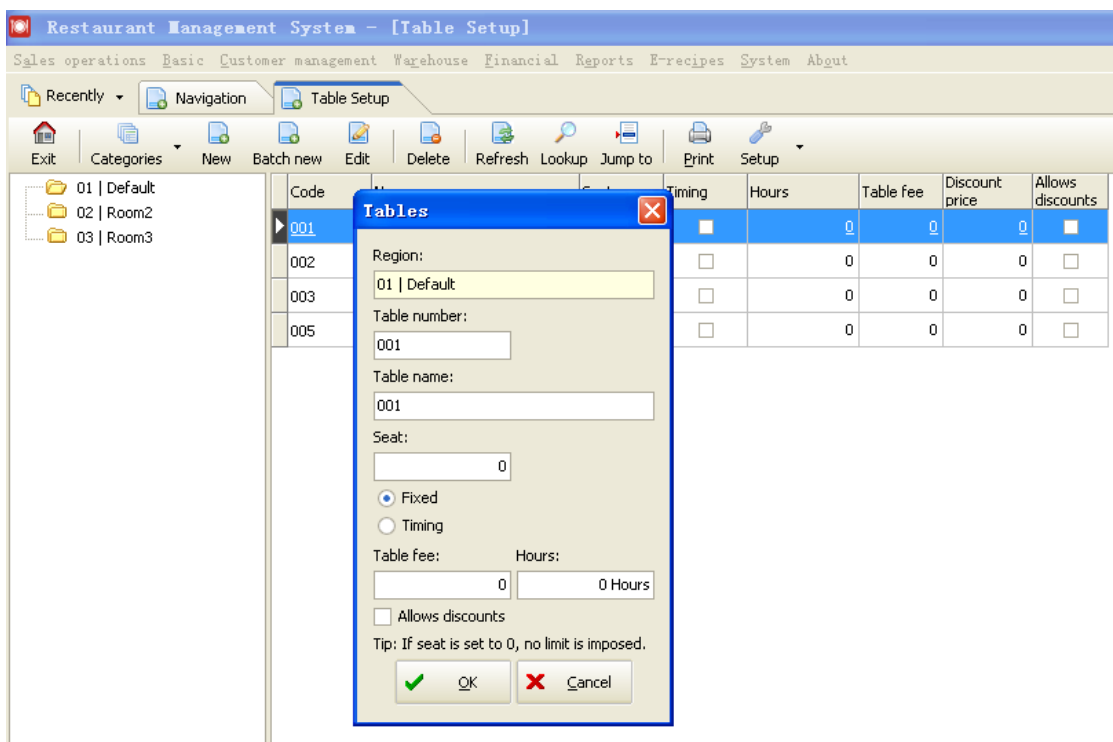
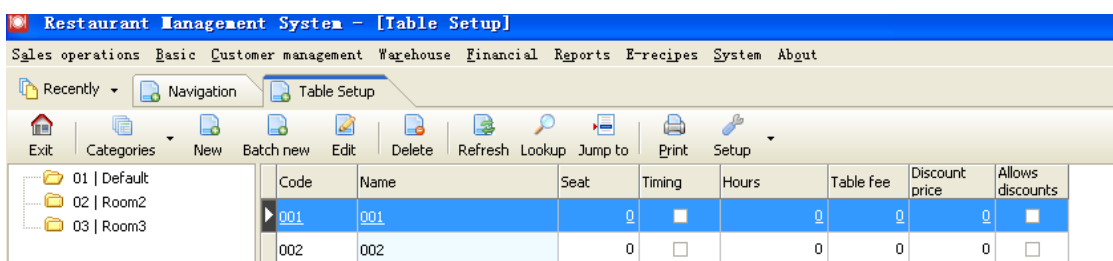


Table classification

open a menu **【Basic】 > 【Table detail】**



例：Click [new] to appear on the top, enter the name of the table "001", and keep it. .

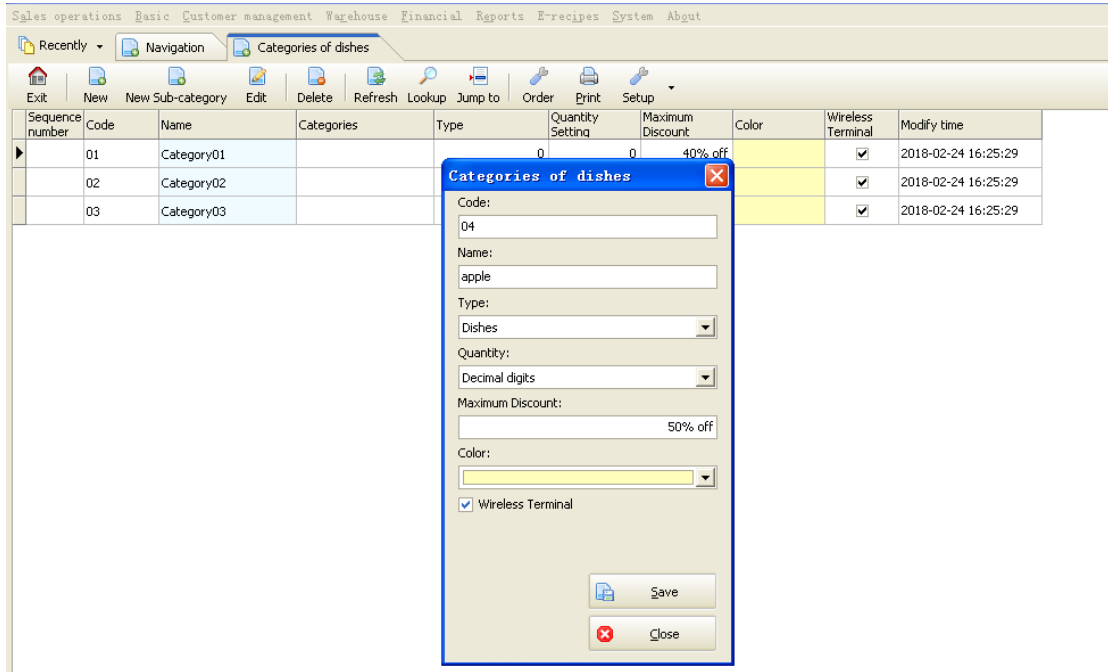


Welcome to use the food and beverage management system

If you need to modify, select the corresponding table name and click the modified button to modify it.

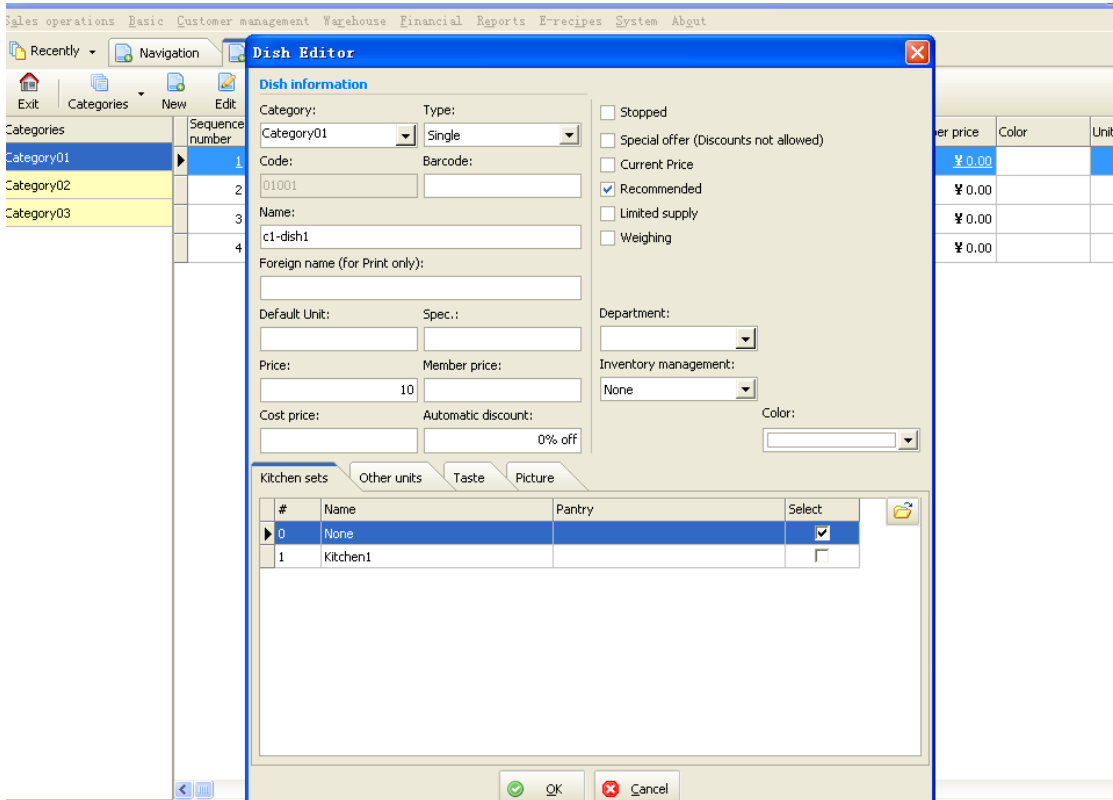
Classification of dishes

Open the menu [basic information] [classification of dishes]



3. The details of the dishes

Open the menu [basic information] >[details of dishes]

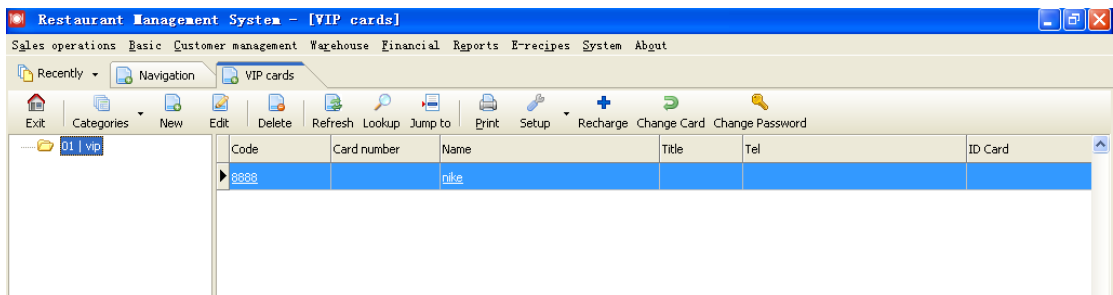


For example: first select the appropriate dish classification, click [new] appear on the map. Select the corresponding type, enter the dish name and price

三. Member customer management

VIP card information (member information)

Open the menu [customer management] > [VIP card data]



The VIP card information can establish your own membership files, such as the joint membership style, discount scheme, member storage value, integral management, etc. .

三. Report center

The report center can inquire all sales reports, including cash collection report, sales flow report, sales summary report, daily operation record, inventory report and so on.

一. Collection summary

Open menu [report center] > [sales report] > [receipt summary]

This module can query the cashier's cashier's receipt in a specified time.

Welcome to use the food and beverage management system

Sales mode	Date	Shift	Cashier	First bill	End bill	Customer	Dishes					Tab
							Quantity	Original price	Plus	Discount	Food total	
Sale	2018-03-09	Whole day	888	01-A-1803090001	01-A-1803090001	0	3	70	0	0	70	70

1. Sales list

Open menu [report center] > [sales report] > [sales list]

This module can query statements with the sales of water within the specified time restaurant founding mode

Sales mode	Table number	Table	Sales date	Shift	Checkout time	Bill number	Start time	End time	Remark
Sale	001	001	2018-3-9	Whole day	2018-03-09 10:25:42	01-A-1803090001	2018-03-09 10:25:31	2018-03-09 10:25:42	
						1			

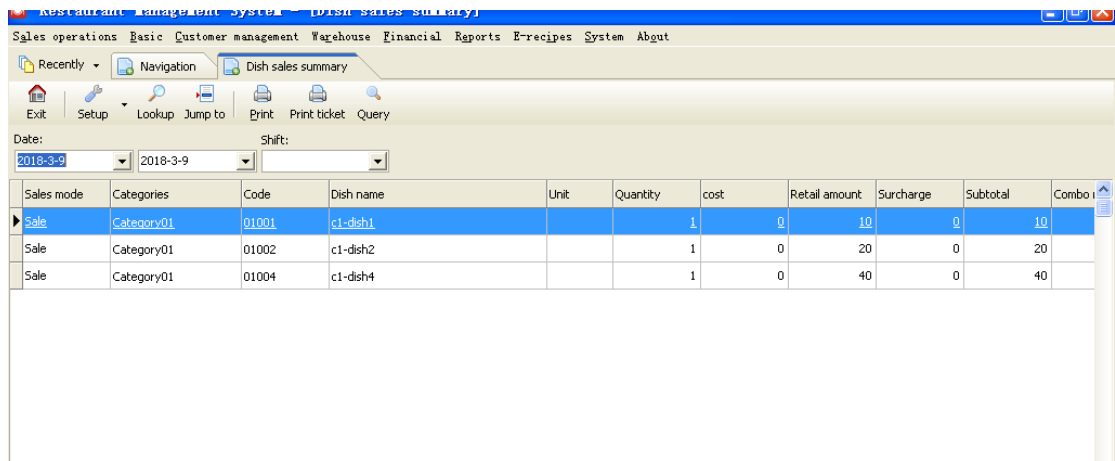
Code	Dish name	Unit	Spec	Taste	Cost price	Retail price	Surcharge	Quantity	Subtotal	Discount	Gross margin	Remark
01001	c1-dish1				0.00	10.00	0.00	1	10.00	0%	10.00	
01002	c1-dish2				0.00	20.00	0.00	1	20.00	0%	20.00	
01004	c1-dish4				0.00	40.00	0.00	1	40.00	0%	40.00	
								3	70.00		70.00	

2. Summary of sale of dishes

Open menu [report center] > [sales report] > [summary of vegetable sales]

This module can query the collection of dishes in a specified period of time.

Welcome to use the food and beverage management system



The screenshot shows a web application window titled "Restaurant Management System - Dish sales summary". The interface includes a navigation menu with options like "Sales operations", "Basic", "Customer management", "Warehouse", "Financial Reports", "E-recipes", "System", and "About". Below the menu is a toolbar with icons for "Exit", "Setup", "Lookup", "Jump to", "Print", "Print ticket", and "Query". There are also date and shift selection dropdowns. The main content is a table with the following data:

Sales mode	Categories	Code	Dish name	Unit	Quantity	cost	Retail amount	Surcharge	Subtotal	Combo
Sale	Category01	01001	c1-dish1		1	0	10	0	10	
Sale	Category01	01002	c1-dish2		1	0	20	0	20	
Sale	Category01	01004	c1-dish4		1	0	40	0	40	

System setup

1. modify the password

Open the menu [system] > [modify the password]

Used to modify the current user login password

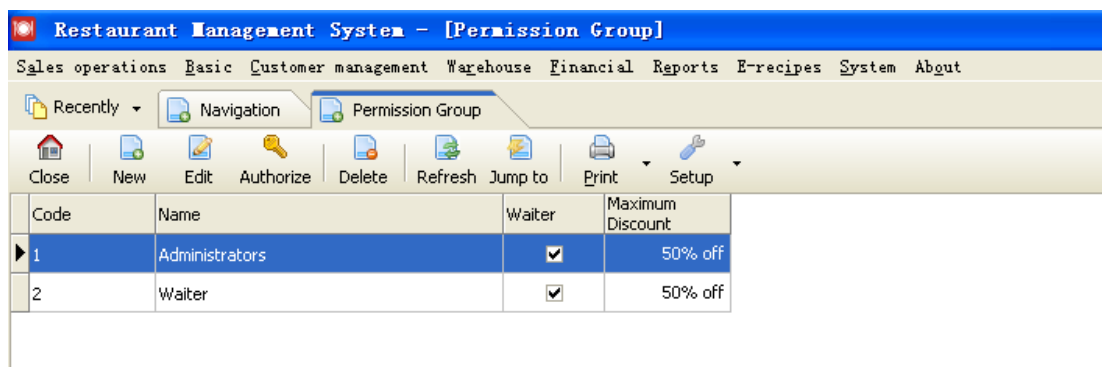


Permissions grouping

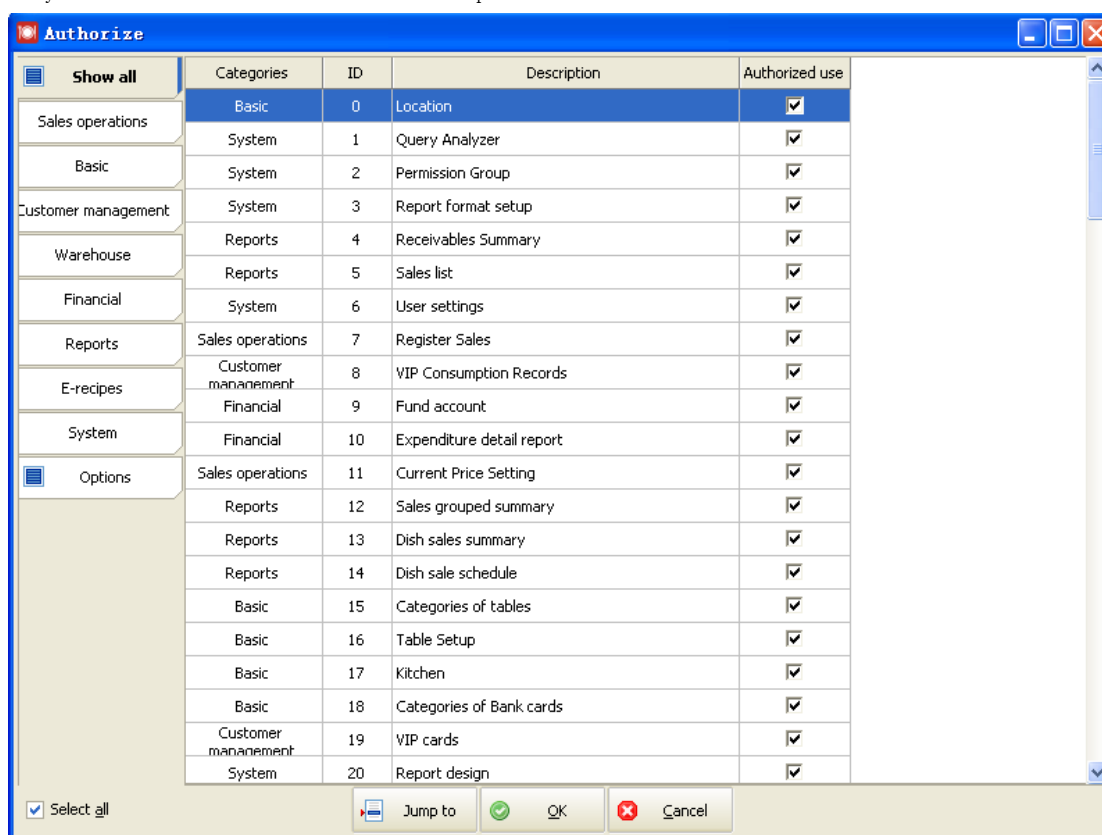
Open menu [system] > [permissions group]

The privilege grouping is used to assign and manage the operation permissions of different user groups, and administrators can create multiple groups and give each group the appropriate operation permissions.

Welcome to use the food and beverage management system



To set the permissions for a group, select a group first, and then press [authorized]. Example: first, select the cashier for the cashier's authorization. Then, according to [authorization], the following figure is shown. If we want to give a certain authority, we only need to hook a certain item to keep it.



User settings

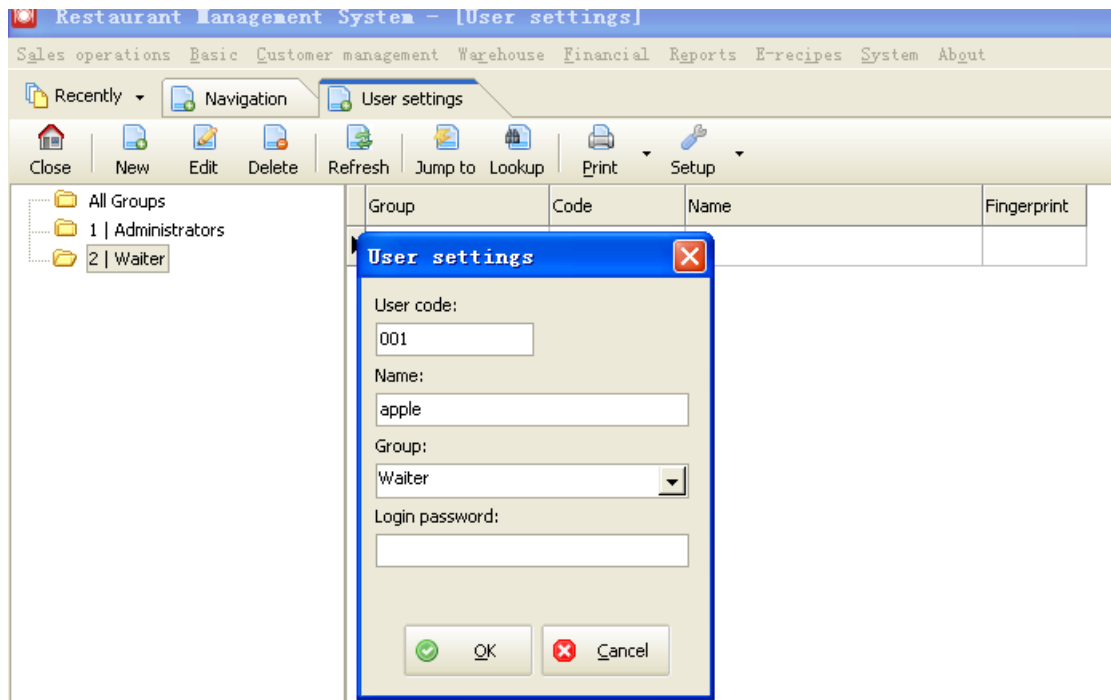
Open menu [system] > [user settings]

User settings are used to manage this system operator.

Example: select [cashier], press [new], enter user code and name, password, save by [determined]. The created user will have the operation permissions of the cashier group.

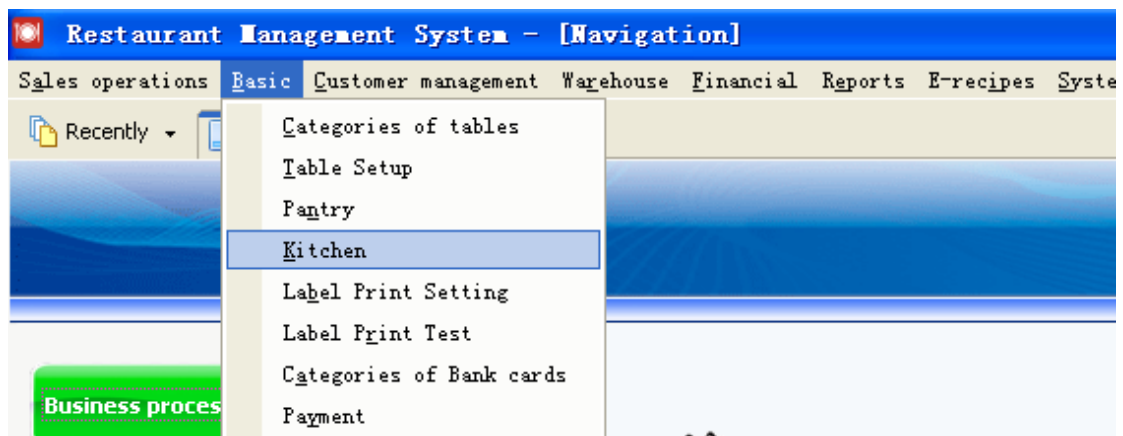
User number: number used when logging on to this system.

Welcome to use the food and beverage management system

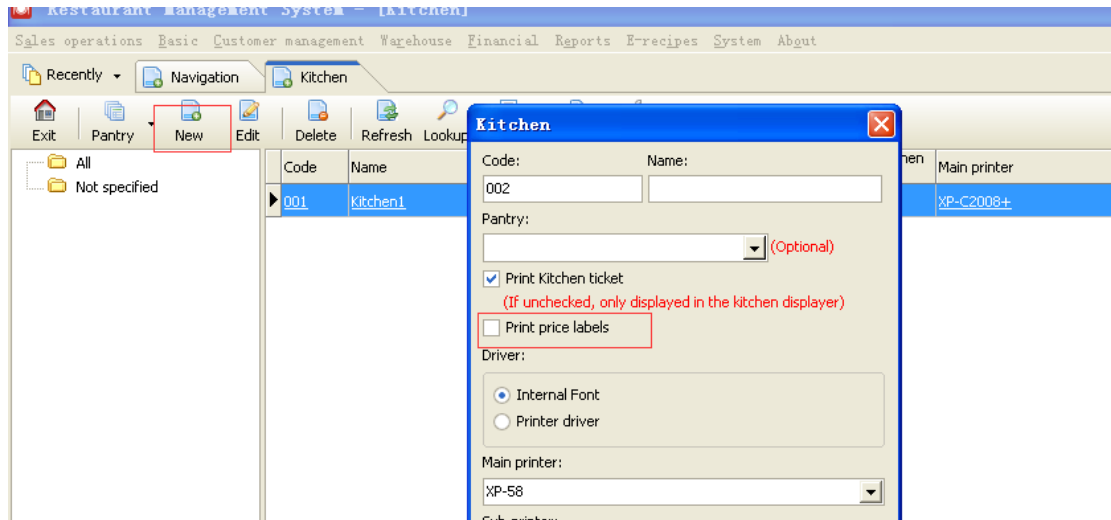


1, Print label setting

Open the menu [basic information] > by [kitchen]



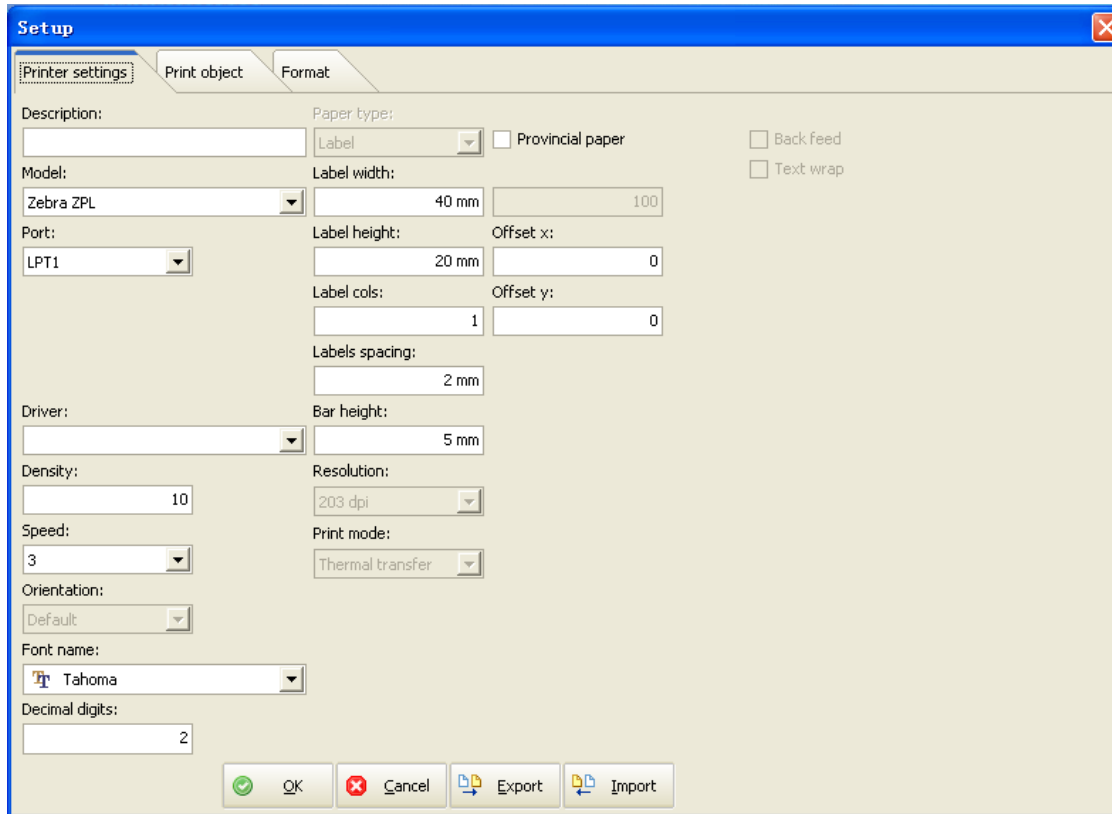
Click the new label to select the print label.



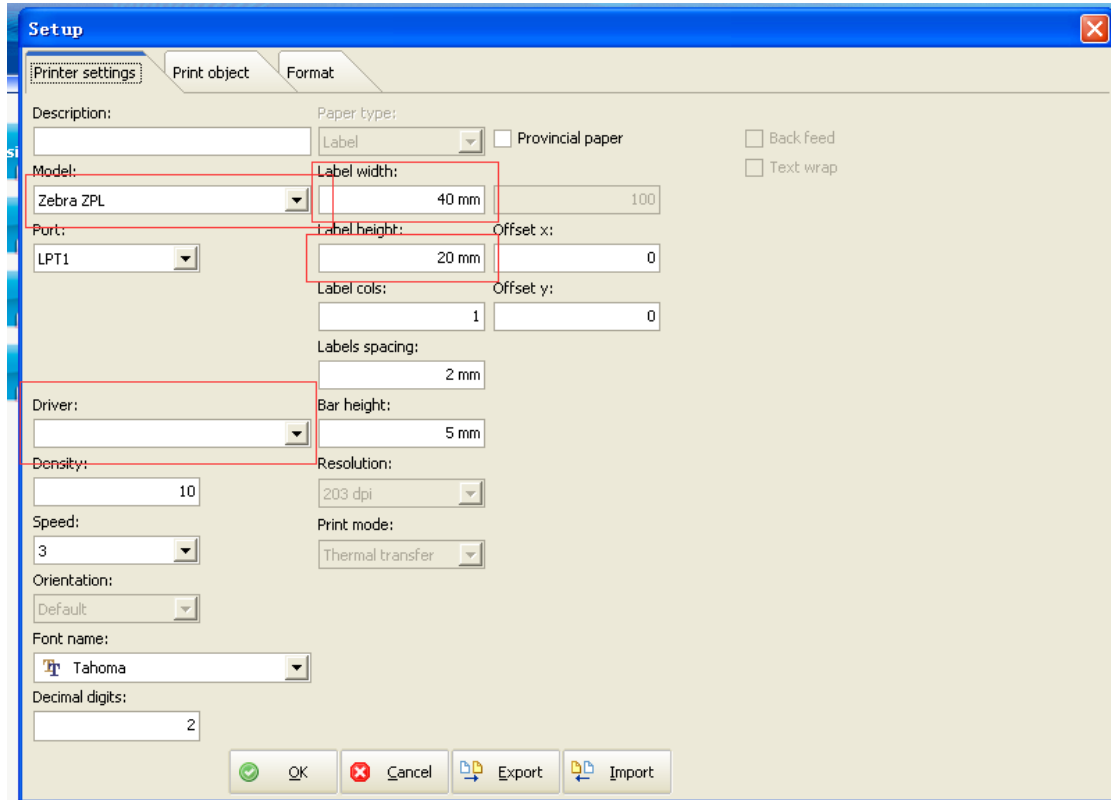
2, Open the menu [basic data], press the label to print



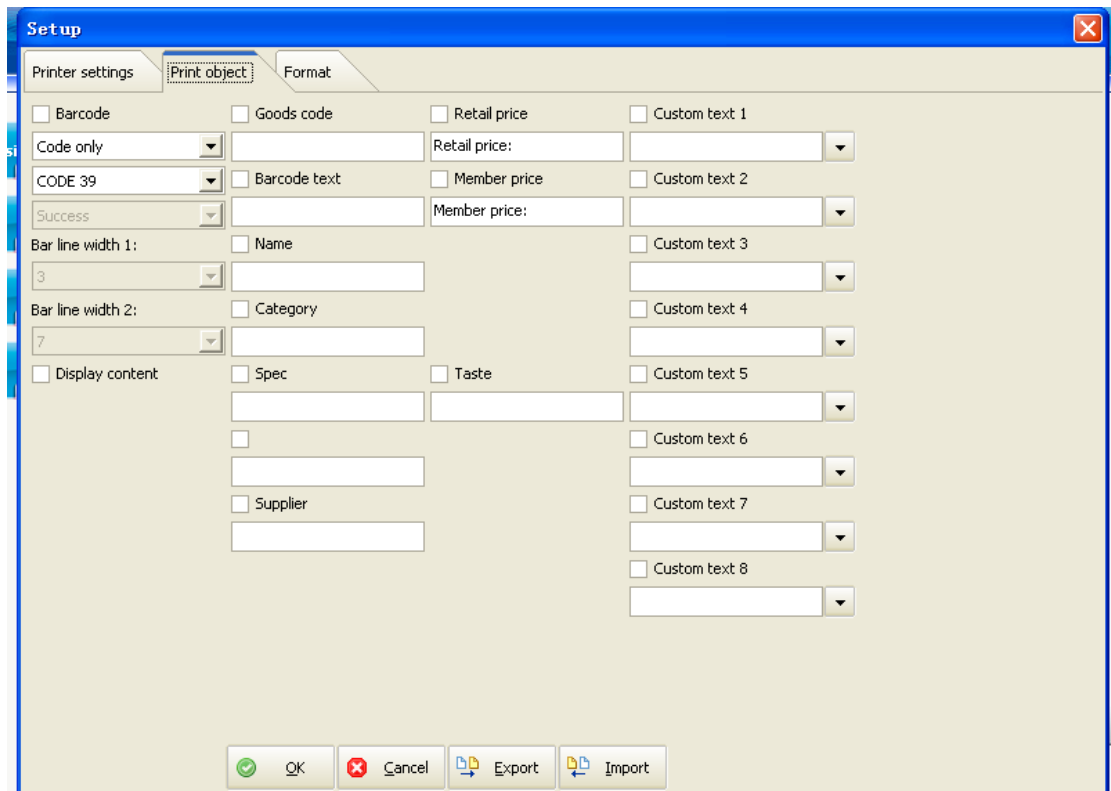
3, This module is used for the label setting, including the printer settings
print object print format



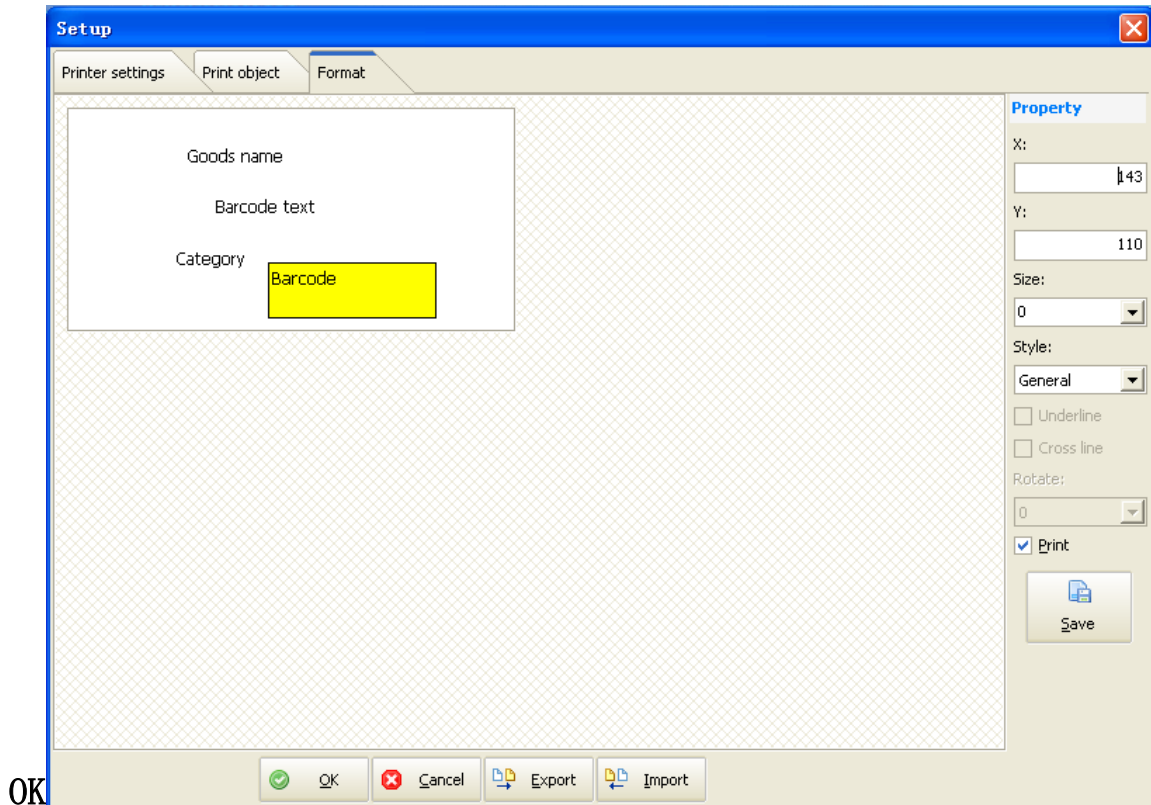
A .Click the printer settings, select the stripe driver and drive name for the paper size format



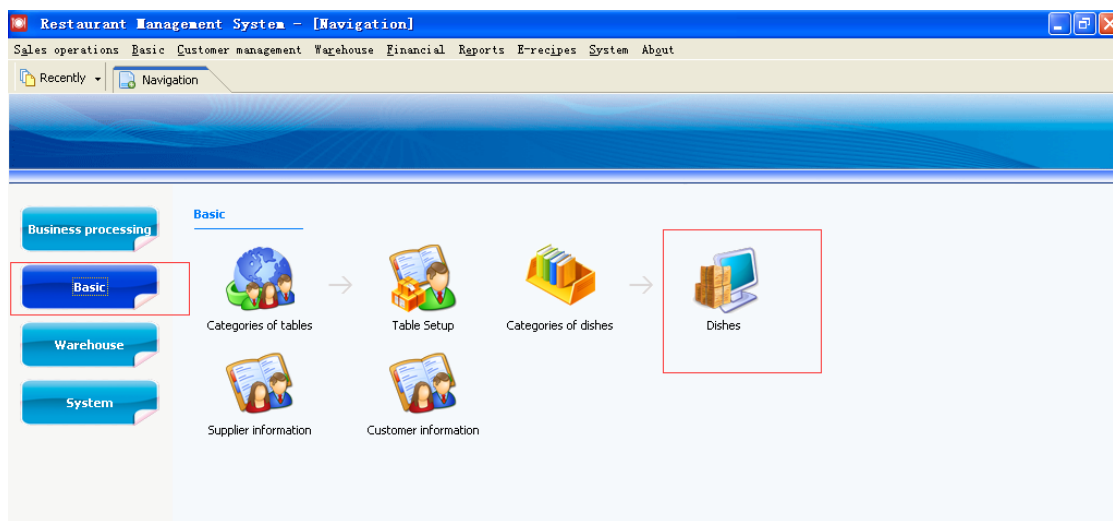
B. Click on the print object to choose the printed content to be printed in it



Click print format "just the content you just chose to adjust the position
print format" click OK



4. Open the menu [basic information].



Click batch settings to start the kitchen list printing

Welcome to use the food and beverage management system

